

HYATT REGENCY CHICAGO  
 151 East Wacker Drive  
 Chicago, Illinois 60601, USA  
 T +1 312 565 1234  
 F +1 312 239 4541  
 chicago.regency.hyatt.com

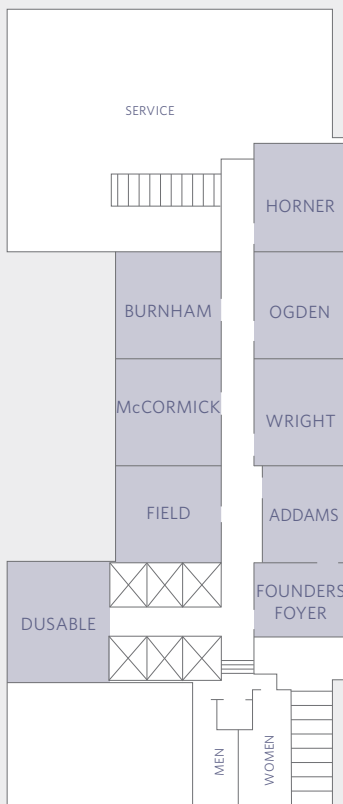


CAPACITY CHART



Room Name	Room Dimensions L x W x H	Room Size Sq. Ft.	Banquet 6' Rnds of 10 (No AV)	Reception	Theater (AV)	Classroom (AV)	Boardroom	U-Shape	Hollow Square	Exhibit
Third Floor (West Tower)										
FOUNDERS SUITES										
Dusable	26'5" x 26'7" x 9'	677	40	60	50	27	28	18	30	—
Field	25'5" x 26'3" x 9'	688	40	60	50	27	28	18	30	—
McCormick	25'5" x 26'3" x 9'	688	40	60	50	27	28	18	30	—
Burnham	25'5" x 24' x 10'	688	40	60	50	27	28	18	30	—
Addams	22' x 24'10" x 9'	556	40	50	32	18	20	15	18	—
Wright	23'8" x 26'3" x 9'	628	40	60	40	24	24	18	24	—
Ogden	23'8" x 26'3" x 9'	628	40	60	40	24	24	18	24	—
Horner	23'8" x 26'3" x 9'	628	40	60	40	24	24	18	24	—
Founders Foyer	16' x 23'10" x 9'	446	—	—	—	—	8	—	—	—

FLOOR PLAN



Note: Above setups are tables and chairs ONLY without space left for other equipment such as staging, AV, display tables, registration tables or coffee breaks.

HYATT REGENCY CHICAGO  
 151 East Wacker Drive  
 Chicago, Illinois 60601, USA  
 T +1 312 565 1234  
 F +1 312 239 4541  
 chicago.regency.hyatt.com

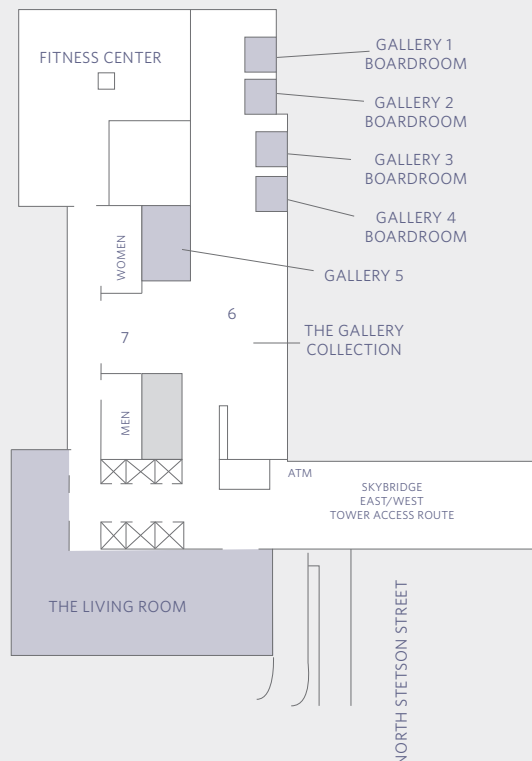


CAPACITY CHART



Room Name	Room Dimensions L x W x H	Room Size Sq. Ft.	Banquet 6' Rnds of 10 (No AV)	Reception	Theater (AV)	Classroom (AV)	Boardroom	U-Shape	Hollow Square	Exhibit
Skyway Level (West Tower)										
THE LIVING ROOM	—	—	—	—	—	—	—	—	—	—
GALLERY COLLECTION										
The Gallery Lounge 6	23' x 52'10"	1,206	—	—	—	—	—	—	—	—
The Gallery Lounge 7	32'2" x 24'2"	759	—	—	—	—	—	—	—	—
Gallery 1 Boardroom	21'4" x 10'4"	223	—	—	—	—	10	—	—	—
Gallery 2 Boardroom	21'4" x 11'4"	251	—	—	—	—	10	—	—	—
Gallery 3 Boardroom	21'4" x 12'2"	258	—	—	—	—	10	—	—	—
Gallery 4 Boardroom	21'4" x 11'10"	284	—	—	—	—	10	—	—	—
Gallery 5	17'9" x 28'4"	470	20	40	30	24	18	—	—	—

FLOOR PLAN



Note: Above setups are tables and chairs ONLY without space left for other equipment such as staging, AV, display tables, registration tables or coffee breaks.

HYATT REGENCY CHICAGO  
 151 East Wacker Drive  
 Chicago, Illinois 60601, USA  
 T +1 312 565 1234  
 F +1 312 239 4541  
 chicago.regency.hyatt.com

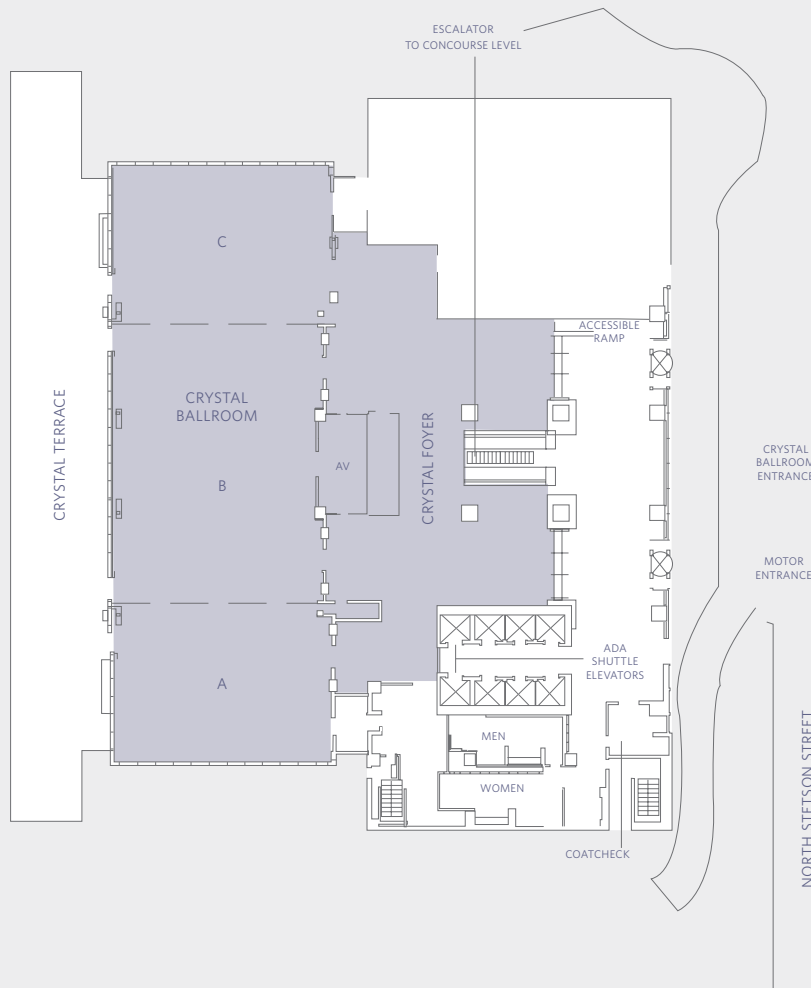


CAPACITY CHART



Room Name	Room Dimensions L x W x H	Room Size Sq. Ft.	Banquet 6' Rnds of 10 (No AV)	Reception	Theater (AV)	Classroom (AV)	Boardroom	U-Shape	Hollow Square	Exhibit
Lobby Level (West Tower)										
CRYSTAL BALLROOM	167' x 59' x 19'	9,853	700	1,000	950	500	—	—	—	40
Crystal A	43' x 59' x 19'	2,584	160	250	280	125	50	56	66	—
Crystal B	80' x 56' x 19'	4,559	320	500	450	240	100	70	82	—
Crystal C	43' x 59' x 19'	2,586	160	250	280	125	50	56	66	—
Crystal AB or BC	123' x 59' x 19'	7,198	480	750	870	380	120	129	150	—
CRYSTAL FOYER	—	5,120	—	400	—	—	—	—	—	—

FLOOR PLAN



Note: Above setups are tables and chairs ONLY without space left for other equipment such as staging, AV, display tables, registration tables or coffee breaks.

HYATT REGENCY CHICAGO  
 151 East Wacker Drive  
 Chicago, Illinois 60601, USA  
 T +1 312 565 1234  
 F +1 312 239 4541  
 chicago.regency.hyatt.com



CAPACITY CHART

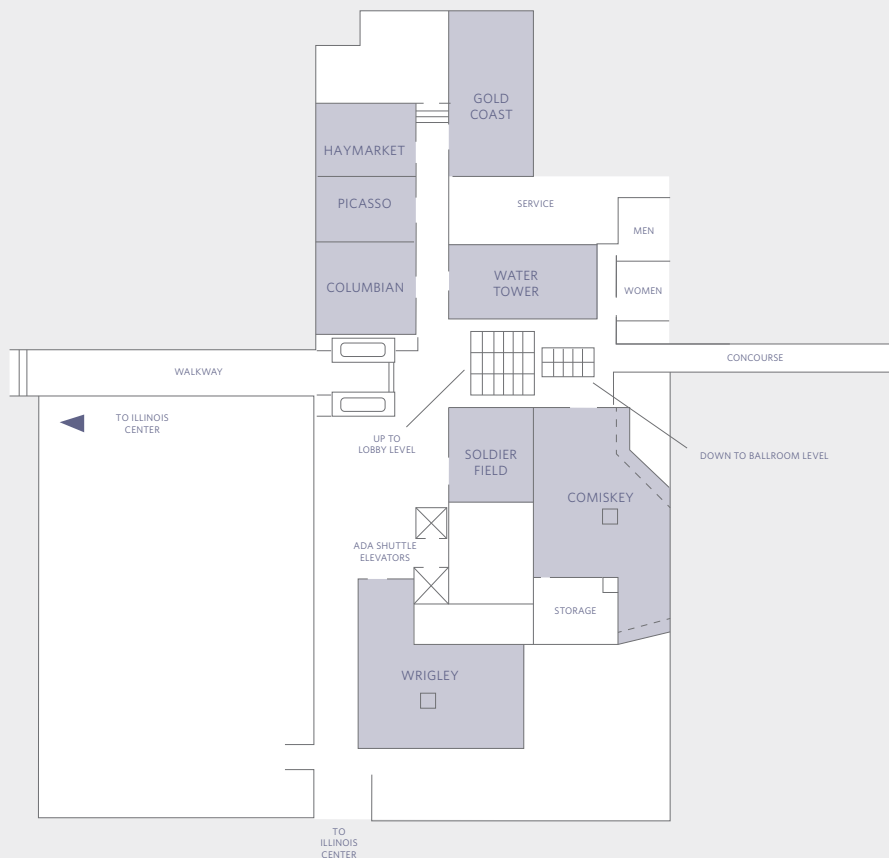


Room Name	Room Dimensions L x W x H	Room Size Sq. Ft.	Banquet 6' Rnds of 10 (No AV)	Reception	Theater (AV)	Classroom (AV)	Boardroom	U-Shape	Hollow Square	Exhibit
-----------	------------------------------	----------------------	-------------------------------------	-----------	-----------------	-------------------	-----------	---------	------------------	---------

Concourse Level (West Tower)

LANDMARK SUITES										
Comiskey	40' x 62' x 9'	1,982	70	200	90	84	40	36	42	—
Water Tower	45'3" x 25' x 9'	1,143	80	120	120	54	28	26	36	—
Gold Coast	47'6" x 25' x 9'	1,178	80	120	120	54	28	26	36	—
Haymarket	29'6" x 19'6" x 9'	562	40	60	30	24	24	20	25	—
Picasso	29'6" x 22' x 9'	599	40	60	30	30	24	18	24	—
Columbian	27'3" x 25' x 9'	681	40	60	60	33	26	25	30	—
Soldier Field	34' x 25'8 x 9'	789	40	70	45	30	24	25	30	—
Wrigley	43' x 52' x 9'	1,540	70	140	60	48	30	25	30	—

FLOOR PLAN



Note: Above setups are tables and chairs ONLY without space left for other equipment such as staging, AV, display tables, registration tables or coffee breaks.

HYATT REGENCY CHICAGO  
 151 East Wacker Drive  
 Chicago, Illinois 60601, USA  
 T +1 312 565 1234  
 F +1 312 239 4541  
 chicago.regency.hyatt.com



CAPACITY CHART



Room Name	Room Dimensions L x W x H	Room Size Sq. Ft.	Banquet 6' Rnds of 10 (No AV)	Reception	Theater (AV)	Classroom (AV)	Boardroom	U-Shape	Hollow Square	Exhibit
Ballroom Level (West Tower)										
REGENCY BALLROOM	72' x 230' x 11'8"	16,560	1,000	1,600	1,600	750	—	—	—	90
Regency A, B, C or D	72' x 58' x 11'8"	4,176	240	400	400	220	70	72	100	20
Regency AB, BC or CD	72' x 117' x 11'8"	8,424	480	800	800	450	140	144	200	40
Regency ABC or BCD	72' x 174' x 11'8"	12,528	750	1,200	1,200	675	—	—	—	60
INTERNATIONAL SUITES	59'6" x 81'3" x 7'6"	3,936	240	350	—	—	—	—	—	22
Toronto	59'6" x 26'6" x 8'5"	1,558	100	150	120	96	55	55	60	10
Hong Kong	28' x 27' x 8'5"	808	40	50	60	36	30	23	28	3
Acapulco	59'6" x 27' x 8'5"	1,558	100	150	120	96	55	55	60	10
CITY SUITES										
Atlanta	24' x 32' x 7'9"	768	40	60	60	36	24	18	24	—
San Francisco	25' x 26' x 7'9"	650	40	60	55	27	24	29	32	—
New Orleans	28' x 33' x 7'9"	906	50	70	65	45	30	24	30	—
West Tower (36th Floor)										
BOARD OF TRADE	23' x 27'	621	—	—	—	—	16	—	—	—

\*NOTE: Above setups are tables and chairs ONLY without space left for other equipment such as staging, AV, display tables, registration tables or coffee breaks.

HYATT REGENCY CHICAGO  
151 East Wacker Drive  
Chicago, Illinois 60601, USA  
T +1 312 565 1234  
F +1 312 239 4541  
chicago.regency.hyatt.com



FLOOR PLAN  
Ballroom Level (West Tower)





HYATT REGENCY CHICAGO  
 151 East Wacker Drive  
 Chicago, Illinois 60601, USA  
 T +1 312 565 1234  
 F +1 312 239 4541  
 chicago.regency.hyatt.com

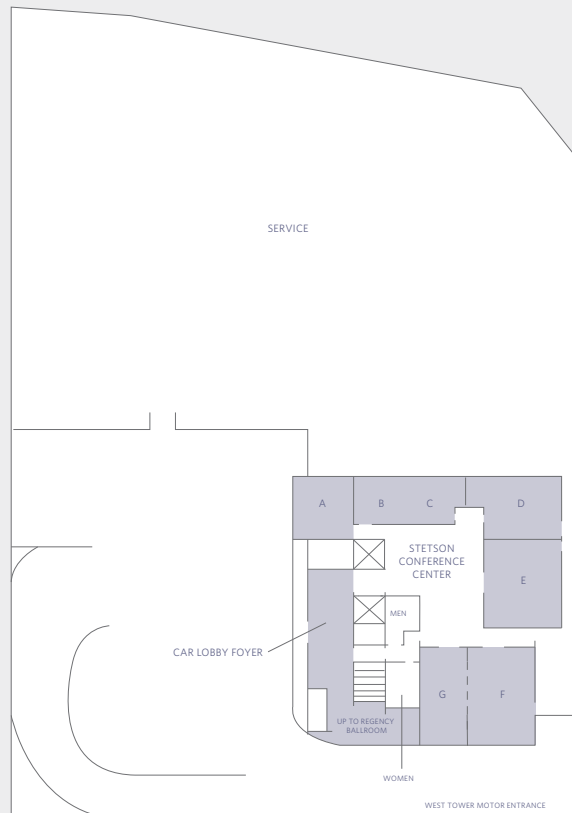


## CAPACITY CHART



Room Name	Room Dimensions L x W x H	Room Size Sq. Ft.	Banquet 6' Rnds of 10 (No AV)	Reception	Theater (AV)	Classroom (AV)	Boardroom	U-Shape	Hollow Square	Exhibit
Exhibit Level (West Tower)										
STETSON CONFERENCE CENTER										
Stetson Suite A	9' x 19' x 8'	378	10	25	24	15	12	—	—	—
Stetson Suite BC	30' x 17' x 8'	510	30	40	45	18	24	27	30	—
Stetson Suite D	18' x 24' x 8'	432	10	25	30	18	20	10	12	—
Stetson Suite E	30' x 27' x 8'	810	40	55	50	21	26	14	16	—
Stetson Suite F	36' x 25' x 8'	900	50	60	70	45	34	18	20	—
Stetson Suite G	36' x 14' x 8'	504	30	40	48	27	14	14	14	—
Stetson Suite F-G	36' x 39' x 8'	1,404	80	90	—	—	—	—	—	—

## FLOOR PLAN



Note: Above setups are tables and chairs ONLY without space left for other equipment such as staging, AV, display tables, registration tables or coffee breaks.